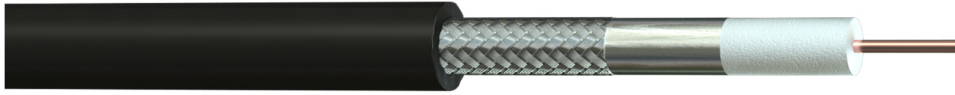


Part No: 390L60H-E00
Description: ANT-600 50 Ohm Antennax Low Smoke Halogen Free (LSHF) Black Coaxial Cable



Construction

Conductor Material : Copper Clad Aluminium
Conductor Size : 1/4.47 mm
Dielectric : Foam Polyethylene (FPE)
Diameter of Dielectric : 11.56 mm
1st Screen Material : Bonded Aluminium Foil
2nd Screen Material : Tinned Copper Wire Braid (>90% Coverage)
Outer Sheath Material : Low Smoke Halogen Free (LSHF)
Outer Sheath Colour : Black



Electrical Characteristics

Impedance : 50 Ω ± 2
Capacitance @ 1 kHz : 76 pF/m ± 5
Velocity of Propagation : 85 %
Conductor Resistance @ 20°C : ≤ 1.8 Ω /km
Screen Resistance @ 20°C : ≤ 5.75 Ω /km
Peak Power : 40.0 kW

Attenuation @ 20°C

Frequency (MHz)	Attenuation (dB/100ft)	Attenuation (dB/100m)	Frequency (MHz)	Attenuation (dB/100ft)	Attenuation (dB/100m)
30	0.5	1.6	1500	3.3	10.8
50	0.6	2.0	1800	3.7	12.0
150	1.0	3.2	2000	3.9	12.7
220	1.2	3.8	2500	4.4	14.5
450	1.7	5.6	5800	7.2	23.6
900	2.5	8.2			

Return Loss @ 20°C

Frequency (MHz)	Return Loss (dB)
30-3000MHz	≥ 15

Physical Characteristics

Overall Diameter : 15.0 mm (±0.20mm)
Bending Radius : 5 x OD
Temperature Rating : -40°C to +75°C
Weight : 200 kg/km

Standards

Flame Retardant : BS EN 60332-1-2, BS EN 60332-3-24 Cat C
Low Smoke Generation : BS EN 61034-2
Halogen Gas Emission : BS EN 60754-1&2
RoHS3 Compliant : Yes
UV & Weather Resistant : ISO 4892-3
CE Compliant : CPR (305/2011)
CPR Classification : Eca (EN50575:2014+A1:2016)