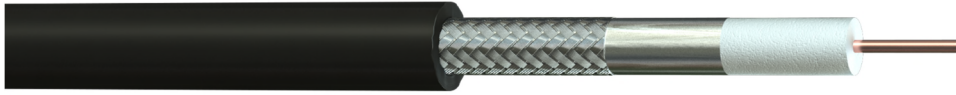


Part No: 390L20
Description: ANT-200 50 Ohm Antennax Polyethylene (PE) Black Coaxial Cable



Construction

Conductor Material : Solid Bare Copper
 Conductor Size : 1/1.12 mm
 Dielectric : Foam Polyethylene (FPE)
 Diameter of Dielectric : 2.95 mm
 1st Screen Material : Bonded Aluminium Foil
 2nd Screen Material : Tinned Copper Wire Braid (>88% Coverage)
 Outer Sheath Material : Polyethylene (PE)
 Outer Sheath Colour : Black

Electrical Characteristics

Impedance : 50 $\Omega \pm 2$
 Capacitance @ 1 kHz : 80 pF/m ± 5
 Velocity of Propagation : 83 %
 Conductor Resistance @ 20°C : $\leq 17.6 \Omega / \text{km}$
 Screen Resistance @ 20°C : $\leq 16.1 \Omega / \text{km}$
 Peak Power : 2.5 kW

Attenuation @ 20°C

Frequency (MHz)	Attenuation (dB/100ft)	Attenuation (dB/100m)	Frequency (MHz)	Attenuation (dB/100ft)	Attenuation (dB/100m)
30	1.9	6.1	1500	12.5	40.9
50	2.3	7.5	1800	13.8	45.1
150	3.7	12.1	2000	14.6	47.8
220	4.5	14.6	2500	16.6	54.2
450	6.5	21.3	5800	26.4	86.5
900	9.5	31.1			

Return Loss @ 20°C

Frequency (MHz)	Return Loss (dB)
30-3000MHz	≥ 15

Physical Characteristics

Overall Diameter : 4.95 mm ($\pm 0.15\text{mm}$)
 Bending Radius : 5 x OD
 Temperature Rating : -40°C to +75°C
 Weight : 30 kg/km

Standards

RoHS3 Compliant : Yes
 UV & Weather Resistant : ISO 4892-3